

RESEARCH ARTICLE

OPEN ACCESS

Manuscript received November 10, 2020; Revised December 15, 2021; accepted January 10, 2022; date of publication February 20, 2022

Digital Object Identifier (DOI): <https://doi.org/10.35882/ijeemi.v4i1.5>

This work is an open-access article and licensed under a Creative Commons Attribution-ShareAlike 4.0 International License ([CC BY-SA 4.0](https://creativecommons.org/licenses/by-sa/4.0/))



Design and Implementation of Portable and Prospective Embedded System and IoT Laboratory Kit Modules

Era Madona¹, Yulastri¹, Anggara Nasution¹, and M.Irmansyah¹

¹Jurusan Teknik Elektro, Politeknik Negeri Padang, 25168, Padang – Sumatera Barat, Indonesia

Corresponding author: Era Madona emadona38@gmail.com

ABSTRACT Laboratory practice activities are important activities for vocational education. The learning process is not optimal because laboratory equipment is inadequate. The purpose of this research is to design and implement a new design of a low-cost, portable and prospective laboratory kit module. Laboratory kits are made easy to assemble, with relatively small dimensions, and suitable for use in laboratories with limited experimental space and funds. The research stages are carried out starting with needs analysis, hardware design, software design and overall testing. The test results of the DHT 11 temperature sensor can read the temperature and humidity index whose data is in the form of digital data and is displayed on the LCD. The PWM of the DC motor and the direction of rotation of the motor can be controlled using the DHT11 sensor. The keypad can control the direction of rotation of the servo motor so that students are expected to be able to provide authentication through a password with a keypad. Testing the module kit for data communication using the local network. Testing the module kit for data communication using the local network is able to control the motor and relay even though there is still a delay in sending data this is due to the condition of the internet network at the time of testing. The results of the economic analysis show that the module is cheaper and portable. The overall test results work well. It is hoped that this module will encourage students to be able to create technological innovation applications based on embedded systems and IoT which will lead to the creation of technology among students.

INDEX TERMS Laboratory kit module, embedded system, IoT, Portable

I. INTRODUCTION

Embedded system is a computer system specifically designed for a specific purpose in order to improve the function of a machine. The development of information technology today is marked by the presence of the Internet of Things (IoT). IoT is an internet service that is integrated with the use of certain types of sensors [1][2]. Currently, IoT-based embedded systems have been widely applied such as for health monitoring [3-6] natural disasters [7-10] agriculture [11-13] and the industrial world [14-16]. The ability of students to apply embedded systems is needed, especially in the world of working and other things. It was successfully applied to the Undergraduate Embedded System Education at Carnegie Mellon [17]. In the academic activity, many studies have been carried out on the Embedded system for its development [18] implementation of servo motor control [10], use of sensors [19] and DC motors [20]. Laboratory practice activities are

important activities for vocational education related to their experience in learning, thinking and solving problems [21]. Limited equipment is a major problem for students causing students to not be able to experience learning. The learning process is not optimal because of inadequate laboratory equipment. Computer simulation is an alternative for these problems [22] such as LabView [23], Matlab [24] and others. This software uses a license whose budget is not affordable by the laboratory. The use of plants for IoT-based industries for learning is impossible because it is very expensive. In this study, a new design for a low-cost, portable laboratory kit module was created for use in embedded systems and data communication practicum in the Electronic Engineering Study Program, Electrical Engineering Department.

Some related researches are study conducted by [22] showed an increase in student learning scores of 7.8% by using

the module for embedded systems practicum activities. Making a cargo transporting robot [25] applied it method as a learning medium for microcontrollers, the results of the study show that the prototype made can be used in the teaching and learning process. A similar study was also conducted by [26] making the MCS51 microcontroller practical module which is portable and lower power consumption. In this study, a module was made to support the teaching process of embedded systems and IoT with a single PCB, portable and low cost. Developments of previous studies are (1). Practical modules are integrated in one PCB board with low power consumption and portable. (2). Integrated with LAN Modules, Wireless and sensors for Internet of Thing (IoT) applications. Miniaturization is the contribution of this research.

The purpose of this research to design and implementation a new design of a low-cost, portable and prospective laboratory kit module. Laboratory kits are made easy to assemble, with relatively small dimensions and suitable for laboratories with limited experimental space and funds. This module kit consists of arduino embedded system modules, mcu nodes, LAN modules for data communication and sensors with various features. It is hoped that this module will encourage students to be able to create technological innovation applications based on embedded systems and IoT which will lead to the creation of technology in between students.

II. MATERIALS AND METHODS

This research was conducted at the Microcontroller Laboratory of the Department of Electrical Engineering, Padang State Polytechnic. The method used in this research is hardware design, software design, hardware testing, software and analysis. The stages of the research can be seen in Figure 1.

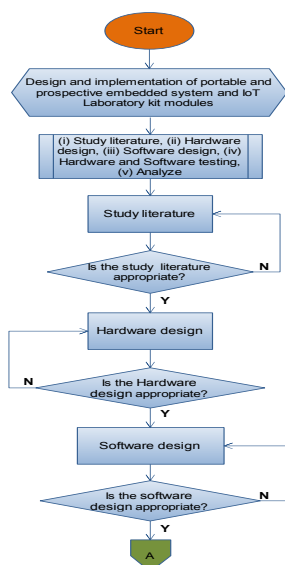
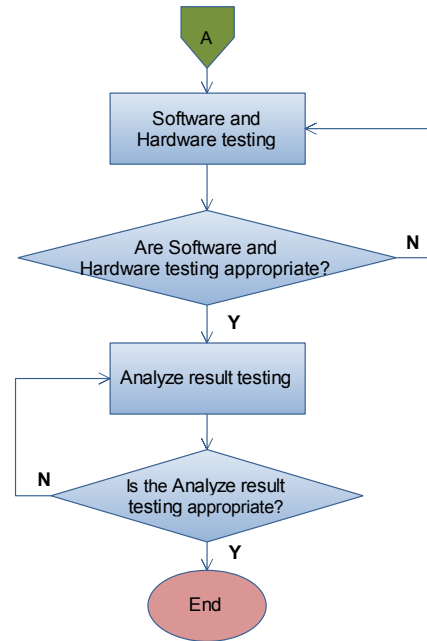


FIGURE 1. Research methods of Design and Implementation of Portable and Prospective Embedded System and IoT Laboratory Kit Modules



A. SYSTEM DESIGN

The learning of Embedded Systems and data communication (IoT) are needed practical activities, so students become more understand and have skills while they graduate. Based on the results of the analysis, we propose this practicum module to overcome the previously identified problem, namely the absence of an Embedded System and data communication (IoT) practicum module. This module consists of input block, process block and output block as shown in Figure 2.

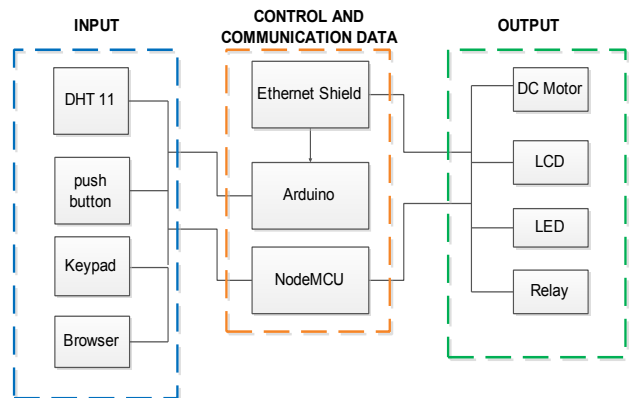


FIGURE 2. Block Diagram of the practicum module

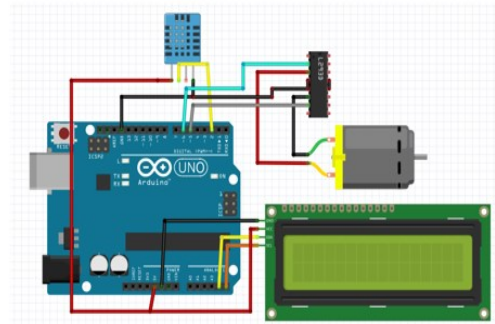
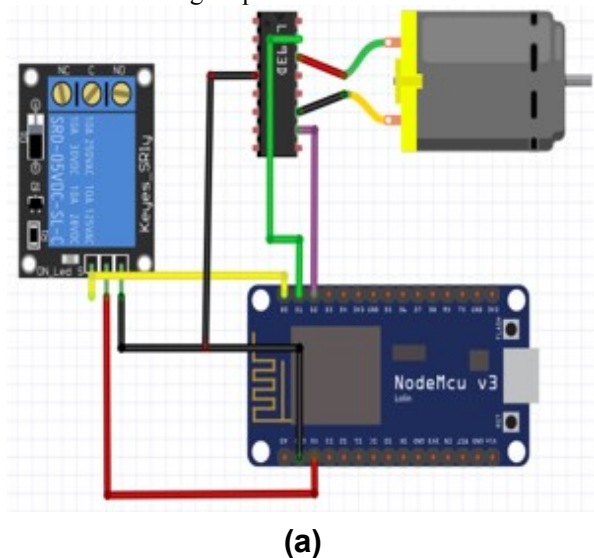
Based on Figure 2, the operation of this practicum module is divided into three parts, namely input, process and output. Input consists of DHT, push button, keypad and browser. DHT11 reads the temperature and sent the data to the Arduino digital pin. Browser provides input to Arduino via Ethernet network and Browser provides input to NodeMCU via wireless network. Once data receive, it will processed on the Arduino uno or NodeMCU according to its use. The using of Arduino is required if the input only wants to be processed

directly to the output and using Ethernet communication. But if the system use the wireless feature as an output, it can use NodeMCU. Furthermore, the data has been processed by the microcontroller is issued to several available outputs including LCD, DC Motor, LED and Relay. The LCD will display characters in the form of text or numbers. The DC motor works to issue a movement that can be adjusted via PWM. LED to display an indicator in the form of light. The relay works as an automatic switch.

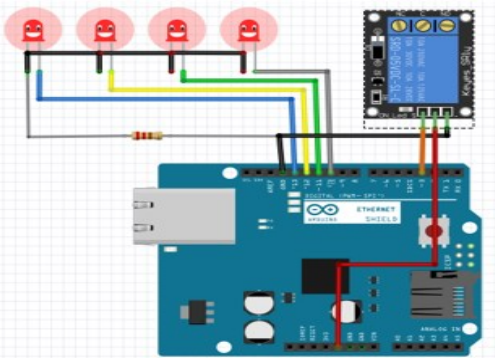
B. HARDWARE DESIGN

The design process starts with the creation of the circuit. This circuit consists of a temperature and humidity detector using a DHT11 sensor [11], push button, LCD, Led, relay and dc motor. DHT11 is connected to the VCC Pin on the Arduino Uno to provide an input voltage of 5V, then the DHT 11 GND Pin is connected to the Arduino GND Pin, the DHT 11 Data Pin is connected to Arduino Pin 2. Then on the LCD, 4 PINs are used, namely VCC, GND, SDA and SCL. The VCC and GND pins are connected to the customized pins on the Arduino, the SDA Pins are connected to the Analog A4 Pins and the SCL Pins are connected to the Analog A5 Pins. Then on the Motor pins that are used only the Positive Motor and Negative Motors are connected to the adjusted Pins on the Arduino Pins as shown in figure 3.

In the LED circuit, the LED Pin 1 is connected to the digital pin 10 on the Arduino Uno and the GND Pin is connected to the Arduino GND Pin. LED 2 is connected to digital pin 11 on Arduino Uno and GND Pin is connected to Arduino GND Pin, LED 3 is connected to digital pin 12 on Arduino Uno and GND Pin is connected to Arduino GND Pin, Data Relay pin is connected to digital pin 3.



(b)



(c)

FIGURE 3. The practical module electronics circuit: (a) NODEMCU Circuit to Motor and Relay; (b) DHT11 Circuit, LCD and Motor to Arduino Uno; (c) LED and Relay circuit to Arduino using Ethernet Network

In the LED circuit, the LED Pin 1 is connected to the digital pin 10 on the Arduino Uno and the GND Pin is connected to the Arduino GND Pin. LED 2 is connected to digital pin 11 on Arduino Uno and GND Pin is connected to Arduino GND Pin, LED 3 is connected to digital pin 12 on Arduino Uno and GND Pin is connected to Arduino GND Pin, Data Relay pin is connected to digital pin 3. As for DC motor circuit, Data Pin 1 on the DC Motor is connected to Pin D1 NODEMCU and Data Pin 2 is connected to pin D2 NODEMCU. The Data Relay pin is connected to the D0 pin of the NODEMCU and the VCC and GND pins correspond to the VCC pin and the GND pin of the NODEMCU. The practicum module design can be seen in Figure 4.

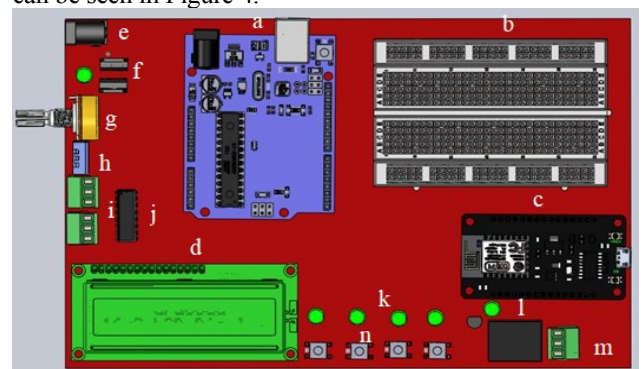


FIGURE 4. Overall Practicum Module Design

Caption on picture 3, a) Arduino, b) Bread Board, c) NODEMCU, d) LCD, e) input voltage, f) Regulator (7805), g) Potensiometer, h) DHT11, i) Pin out dc motor, j) IC L293D, k) LED, l) Relay, m) Pin out relay, n) Push button

C. SOFTWARE DESIGN

The programming in this study uses Arduino IDE version 1.8.14 for the Arduino Uno R3 microcontroller, Ethernet Shield and NodeMCU. The programming stage starts from the acquisition of the DHT11 sensor data and is displayed on the LCD and dc motor control, then using keypad input for servo motor control can be seen in program listing 1.

Listing Program 1

DHT11 Sensor with LCD Display and DC Motor

```
#include <wire.h>
#include <LiquidCrystal_I2C.h>
#include "DHT.h"
LiquidCrystal_I2C lcd(0x27,16,2);
#define DHTPIN 2
#define DHTTYPE DHT11

lcd.setCursor(0,0);lcd.print("SUHU      :");
lcd.setCursor(13,0);lcd.print(t);
lcd.setCursor(15,0);lcd.print("C");

lcd.setCursor(0,1);lcd.print("KELEMBABAN :");
lcd.setCursor(13,1);lcd.print(h);

if (t > 30){
  analogwrite(m1,255);
  analogwrite(m2,0);
}
else if (t >= 24 && t <= 30){
  analogwrite(m1,128);
  analogwrite(m2,0);
}
else{
  analogwrite(m1,0);
  analogwrite(m2,0);
}
}
```

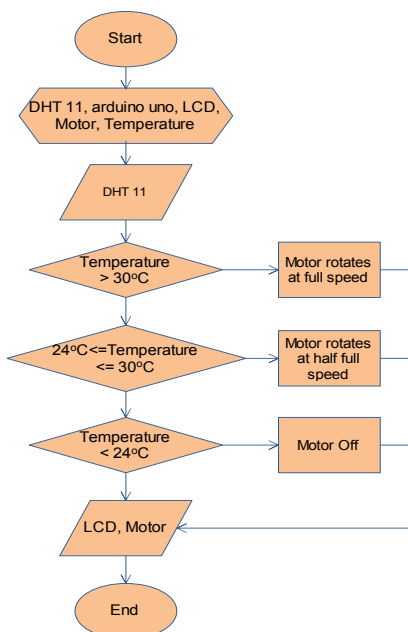


FIGURE 5. Flowchart of DHT11 circuit, LCD and DC Motor to Arduino

Based on Figure 5, it can be explained that the programming starts from the initialization of DHT-11, LCD, temperature and motor. The input is DHT-11, the data issued by DHT-11 is in the form of temperature, where 3 conditions are made, namely when Temperature > 30 then the motor will rotate in full condition, then if 24 <= Temperature <= 30 then the motor will rotate with the condition slowly, and the last condition is if the temperature is <24 then the motor will die. All processed data will be displayed on LCD and Motor.

The next programming stage is controlling DC motors and relays using NodeMCU with wireless communication and HTTP protocol. The display on the browser can be seen in Figure 6. The program listing can be seen in the program listing 2.

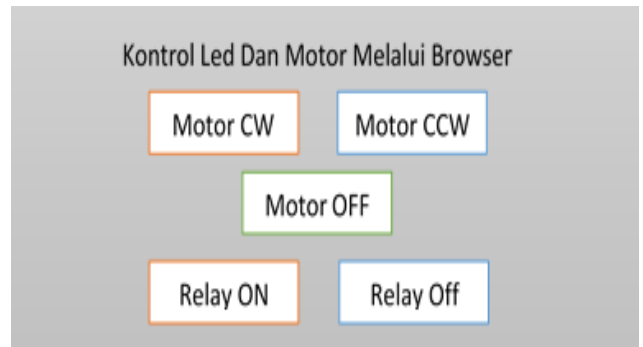


FIGURE 6. Motor Control and Relay Display in Browser

Listing Program 2

Motor and Relay Control with Browser

```
String output5State = "off";
String output4State = "off";
String relayState = "off";
const int relay = 14;
const int motor1 = 12;
const int motor2 = 13;

if (output4State=="off") {
  client.println("<p><a href=\"/4/on\"><button class=\"button\"></a></p>");
} else {
  client.println("<p><a href=\"/4/off\"><button class=\"button button2\">OFF</button></a></p>");
}
client.println("<p>Relay - State " + relayState + "</p>");
if (relayState=="off"){
  client.println("<p><a href=\"/3/on\"><button class=\"button\">>ON</button></a></p>");
}
}
```

III. RESULT AND DISCUSSION

A. ECONOMIC ANALYSIS

Details of the cost and use of materials in the manufacture of practical embedded systems and IoT modules can be seen in table 1. Based on table 1, it can be seen that the total cost for the practical module materials made is Rp. 440,000 with materials and materials that are cheap and widely sold.

TABLE 1
Materials Embedded systems and IoT practicum modules

Devices/Material	Qty	Harga (Rp)
Arduino Uno	1	70.000
NodeMCU	1	45.000
Ethernet Shield	1	60.000
Breadboard	1	20.000
LCD 2x16	1	35.000
DHT 11	1	25.000
Potensiometer	1	10.000
Regulator (7805)	1	5.000
Jack DC	1	4.000
Pin Out Motor	1	5.000
IC L293D	1	25.000
LED	6	6.000

B. PERFORMANCE TESTING OF EMBEDDED SYSTEM AND IOT MODULES

The tests started from testing on the embedded system section and then continued with wireless network data communication using the http protocol. The practical module that has been made is shown in Figure 7. Figures 8a, 8b and 8c are the results of the performance test of the embedded system module which consists of an output, input and Analog Digital Converter (ADC) circuit.

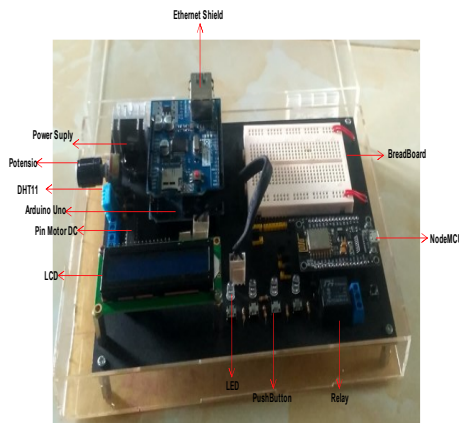


FIGURE 7. The practical module of embedded systems and data

The test in this section is based on program listing 1 to verify that the components in the output section are working properly consisting of LEDs, LCDs, DC motors and servo motors. The LCD uses I2C LCD, this module is controlled serially in sync with the I2C/IIC protocol. (inter integrated circuit) or TWI (Two Wire interface) with addresses 0x27 and 0x37. To control the DC motor, the motor driver IC L293D is used. The EN1 pin is a pin that is used to enable the DC motor (ON/OFF DC motor), therefore the EN1 pin is connected to the PWM

output of the Arduino module. The DC motor test table on the practical module can be seen in table 2.

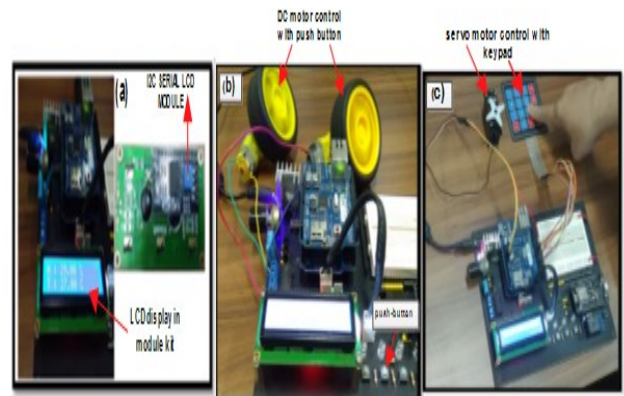
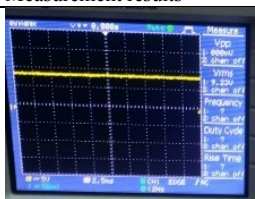
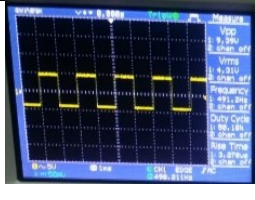
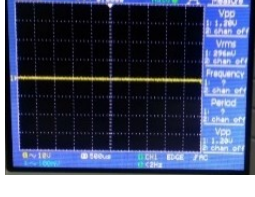


FIGURE 8. Performance test of the designed module kit: (a) image of LCD display and I2C module LCD; (b) Picture of DC motor control with push button; (c) Picture of servo control with keypad

TABLE 2
DC motor pwm measurement

No	Measurement results	Temperature	Information
1		temperature >30	Motor rotates at full speed
2		24 <= temperature <= 30	Motor rotates at half full speed
3		temperature <24	Motor Off

Based on table 2, it can be explained that the waves obtained when the motor is full speed are in the form of a straight line with a voltage of 9.23 V, while when the motor is at half speed, the PWM pulse wave is obtained as shown in table 2 with a voltage of 4.31 V. Meanwhile, when the motor is off, the voltage becomes 0. V with straight waves according to table 2. Servo motor with keypad as a control device to control the servo motor as shown in Figure 8c. The program loaded into the embedded system module is when button 2 is pressed the servo motor rotates at position 20°, when button 4 is pressed the servo motor rotates at position 40°, when button 9 is

pressed the servo motor rotates at position 90°, and when button 0 is pressed the servo motor rotates at position 0°.

TABLE 3

Servo Motor Program Logic with Keypad as Control Device

Keypad	Servo
0	0°
2	20°
4	40°
9	90°

Furthermore, testing the module for data communication, the object of this test is to implement NodeMCU as a server for controlling DC motors. The circuit drawing can be seen in Figure 3 and the programming in the program listing 2. The configuration design of the detailed communication relationship between hardware and the internet network can be seen in Figure 9.

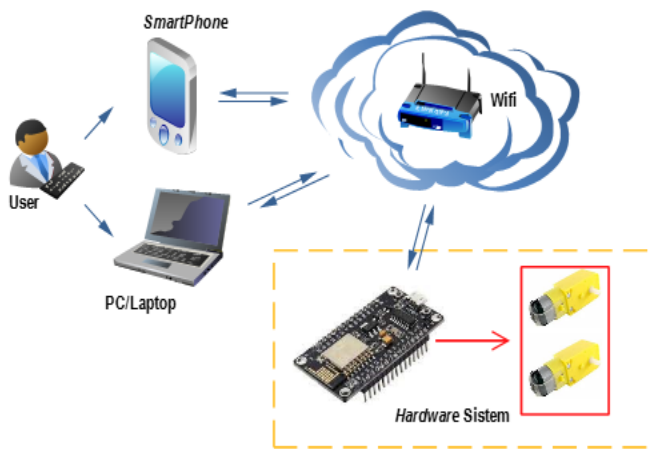


FIGURE 9. Communication System Design

The test is carried out by giving the CW/CCW command for the DC motor, if the CW button is pressed the motor will rotate clockwise, if the CCW motor is pressed, the motor will rotate counterclockwise. For the Relay ON/OFF command to activate the relay in OPEN and Normally CLOSE (NC) conditions. The test results can be seen in Table 4.

TABLE 4

Testing Applications for Controlling DC Motors and Relays based on Mobile Web

Testing Button	Perintah	Testing result
Button CW	Motor CW	Working properly
Button CCW	MotorCCW	Working properly
Button Motor OFF	Motor Off	Working properly
Button Relay ON	Relay OPEN	Working properly
Button Relay OFF	Relay Normaly CLOSE (NC)	Working properly

Based on the test results, the application is designed to be able to control the motor and relay, although there is still a delay in sending data, this is due to the condition of the internet network at the time of testing.

In terms of performance, the pratikum module that has been created provides reliable performance from the test results of embedded systems and data communication through control scenarios using the mobile web.

C. OVERALL PRACTICUM MODULE TESTING RESULTS

Furthermore, observations and testing of the module as a whole are carried out from a series of inputs, outputs, sensors and network-based data communications that are adapted to student practicum jobs, which can be seen in table 5.

TABLE 5

Overall Practicum Module Testing Results

Practical Job	Expected	Observation and testing	Information
Control application with keypad input, push button, sensor	Keypad, push button and sensor can control LED, LCD, dc motor and servo motor	Keypad, push button and sensor can control LED, LCD, dc motor and servo motor	Working properly
LED display application, DC motors, LCD and Servo motors	LED,LCD can be displayed and Servo motor, DC motor can rotate	LED,LCD can be displayed and Servo motor, DC motor can rotate	Working properly
Web-based monitoring system application	NodeMCU and Ethernet can function as a weclient	NodeMCU and Ethernet can function as a weclient	Working properly
Web-based control system application	NodeMCU and Ethernet can function as a server	NodeMCU and Ethernet can function as a server	Working properly

From table 5 it can be seen that the tests were carried out based on student practicum jobs on each input series, and the output results were that all applications tested were successful as expected.

IV. DISCUSSION

Embedded systems and IoT are subjects studied in the electronics engineering curriculum. The ability of students to apply embedded systems is needed, especially in the world of work. Laboratory practice is an important activity for vocational education. Limited equipment is a major problem for students, causing students to not be able to experience learning. The learning process is not optimal because laboratory equipment is inadequate [27]. The embedded systems and IoT practicum module is designed to train students to understand the basic and advanced logic of microcontroller and IoT input and output processes. The

dimensions of the module are 20 x 15 cm at a low cost with a power consumption of 13.5 watts. The comparison of features of the traditional kit module [22][28] with the designed Edukit module is shown in table 6.

This module consists of Arduino as a microcontroller integrated with Ethernet shield and nodemcu as data communication to the internet network. To measure its performance, this module was tested in practical activities. The control of dc motors and relays provides an overview of the process of basic dc motors and control systems [29]. The combination of a keypad and a servo motor explains the basic concept of authentication via a password with a keypad [30]. Monitoring of temperature and humidity provides an overview of the process of data acquisition and data communication using the http protocol [31]. The features of this module are not only used by electronic engineering but can also be used by students of computer engineering, informatics engineering and electrical engineering. The circuit layout in this module is very informative. This module can be used by students to create innovative applications based on embedded systems and IoT that will lead to the creation of technology.

TABLE 6

Comparison between the traditional and module-based edukit

Module Embedded system and IoT base Edukit	Traditional Edukit
Not in a single size big PCB	single size big PCB
Low cost	expensive
Use is simple	Use is complex
Integrated with LAN and Wireless network modules	Not integrated
MCU port pin is free for any application.	MCU port pin is fixed

V. CONCLUSION

In this study, a simple, inexpensive and portable laboratory kit module was developed for use in embedded systems and IoT practicums. Test results DHT 11 temperature sensor can read the index of temperature and humidity whose data is in the form of digital data and displayed on the LCD. The PWM of the DC motor and the direction of rotation of the motor can be controlled using a DHT 11 temperature sensor. The keypad can control the direction of rotation of the servo motor so that students are expected to provide authentication via a password with a keypad. Testing the kit module for data communication using a local network is able to control motors and relays although there are still delays in sending data this is due to the condition of the internet network at the time of testing. The overall test results are as expected.

REFERENCES

[1] Ananda Mohon Ghosh; Debashish Halder; S K Alamgir Hossain.2016. Remote health monitoring system through IoT, 5th International Conference on Informatics, Electronics and Vision (ICIEV).

[2]. Sarfraz Fayaz Khan, Health care monitoring system in Internet of Things (IoT) by using RFID, 2017 6th International Conference on Industrial Technology and Management (ICITM)

[3] L. Lamidi, A. Kholiq, and M. Ali, "A Low Cost Baby Incubator Design Equipped with Vital Sign Parameters", *ijeeemi*, vol. 3, no. 2, pp. 53-58, May 2021.

[4] A. Cholid, H. Ariswati, and S. Syaifudin, "Digital Pressure Meter Equipped with Temperature and Humidity", *ijeeemi*, vol. 2, no. 1, pp. 1-5, Feb. 2020.

[5] M. Islam et al., "Android based heart rate monitoring and automatic notification system," 5th IEEE Reg. 10 Humanit. Technol. Conf. 2017, R10-HTC 2017, vol. 2018-Janua, pp. 436-439, 2018, doi: 10.1109/R10-HTC.2017.8288993.

[6] M. I. Sani, G. A. Mutiara, and R. S. D. W. Putra, "Fit-NES: wearable bracelet for heart rate monitoring," *TELKOMNIKA (Telecommunication Comput. Electron. Control., vol. 17, no. 1, p. 392, 2019, doi: 10.12928/telkomnika.v17i1.11611.*

[7] H. Yuliandoko, Subono, V. A. Wardhany, S. H. Pramono, and P. Siwindarto, "Design of flood warning system based IoT and water characteristics," *Telkomnika (Telecommunication Comput. Electron. Control., vol. 16, no. 5, pp. 2101-2110, 2018, doi: 10.12928/TELKOMNIKA.v16i5.7636.*

[8] E. Madona, M. Irmansyah, and A. Nasution, "Design Dan Implementasi Wireless Sensor Network Pada Prototype Pendeteksian Material Galodo," vol. 11, pp. 39-42, 2019.

[9] J. Lee, I. Khan, S. Choi, and Y. W. Kwon, "A smart iot device for detecting and responding to earthquakes," *Electron., vol. 8, no. 12, pp. 1-19, 2019, doi: 10.3390/electronics8121546.*

[10] S. K. Bhoi et al., "FireDS-IoT: A Fire Detection System for Smart Home Based on IoT Data Analytics," *Proc. - 2018 Int. Conf. Inf. Technol. ICIT 2018*, pp. 161-165, 2018, doi: 10.1109/ICIT.2018.00042.

[11] J. Bauer and N. Aschenbruck, "Design and implementation of an agricultural monitoring system for smart farming," 2018 IoT Vert. Top. Summit Agric. - Tuscany, IOT Tuscany 2018, pp. 1-6, 2018, doi: 10.1109/IOT-TUSCANY.2018.8373022.

[12] S. R. Prathibha, A. Hongal, and M. P. Jyothi, "IoT Based Monitoring System in Smart Agriculture," *Proc. - 2017 Int. Conf. Recent Adv. Electron. Commun. Technol. ICRAECT 2017*, pp. 81-84, 2017, doi: 10.1109/ICRAECT.2017.52.

[13] "IoT-based Intelligent Irrigation Management and Monitoring System using Arduino," *TELKOMNIKA (Telecommunication Comput. Electron. Control., vol. 17, no. 5, pp. 2378-2388, 2019, doi: 10.12928/telkomnika.v17i5.12818.*

[14] H. P. Breivold and K. Sandstrom, "Internet of Things for Industrial Automation-Challenges and Technical Solutions," *Proc. - 2015 IEEE Int. Conf. Data Sci. Data Intensive Syst. 8th IEEE Int. Conf. Cyber, Phys. Soc. Comput. 11th IEEE Int. Conf. Green Comput. Commun. 8th IEEE Inte*, pp. 532-539, 2015, doi: 10.1109/DSDIS.2015.11.

[15] A. Caputo, G. Marzi, and M. M. Pellegrini, "The Internet of Things in manufacturing innovation processes," *Bus. Process Manag. J.*, vol. 22, no. 2, pp. 383-402, 2016, doi: 10.1108/bpmj-05-2015-0072.

[16] H. W. Picot, M. Ateeq, B. Abdullah, and J. Cullen, "Industry 4.0 labview based industrial condition monitoring system for industrial iot system," *Proc. - Int. Conf. Dev. eSystems Eng. DeSE, vol. October-2019, pp. 1020-1025, 2019, doi: 10.1109/DeSE.2019.00189.*

[17] P. Koopman, et al. Undergraduate Embedded System Education at Carnegie Mellon. *ACM Trans. Embed. Comput. Syst.* 2005; 4(3): 500-528.

[18] J. P. Mendoza, J. M. V. Carrizo, and F. J. R. Sánchez, "Project based learning experiences for embedded systems design," *Proc. 2016 Technol. Appl. to Electron. Teaching, TAEE 2016, 2016, doi: 10.1109/TAEE.2016.7528370.*

[19] C. L. C. Bual, R. D. Cunanan, R. A. R. Bedruz, A. A. Bandala, R. R. P. Vicerra, and E. P. Dadios, "Design of Controller and PWM-enabled DC Motor Simulation using Proteus 8 for Flipper Track Robot," 2019 IEEE 11th Int. Conf. Humanoid, Nanotechnology, Inf. Technol. Commun. Control. Environ. Manag. HNICEM 2019, no. 1, pp. 1-5, 2019, doi: 10.1109/HNICEM48295.2019.9072736.

[20] P. Bhadani and V. Vashisht, "Soil moisture, temperature and humidity measurement using arduino," *Proc. 9th Int. Conf. Cloud Comput. Data*

- Sci. Eng. Conflu. 2019, pp. 567–571, 2019, doi: 10.1109/CONFLUENCE.2019.8776973.
- [21] P. Sutyasadi and M. B. Wicaksono, "Joint control of a robotic arm using particle swarm optimization based H₂/H_∞ robust control on arduino," *Telkomnika (Telecommunication Comput. Electron. Control.*, vol. 18, no. 2, pp. 1021–1029, 2020, doi: 10.12928/TELKOMNIKA.V18I2.14749.
- [22] Indrianto, M. N. I. Susanti, R. Arianto, and R. R. A. Siregar, "Embedded system practicum module for increase student comprehension of microcontroller," *Telkomnika (Telecommunication Comput. Electron. Control.*, vol. 16, no. 1, pp. 53–60, 2018, doi: 10.12928/TELKOMNIKA.v16i1.4194.
- [23] R. Sistem, "Penerapan Rangkaian Simulasi Terintegrasi Untuk Efisiensi Penggunaan," vol. 1, no. 10, pp. 4–8, 2021.
- [24] Deaky, B., Lupulescu, N. B., & Ursutiu, D. (2011). Extended educational use of the Microcontroller Student Learning Kit (MCU SLK). 2011 IEEE Global Engineering Education Conference, EDUCON 2011, May 2011, 913–916. <https://doi.org/10.1109/EDUCON.2011.5773254>
- [25] H. G. Espinosa and D. V. Thiel, "MATLAB-Based interactive tool for teaching electromagnetics [education corner]," *IEEE Antennas Propag. Mag.*, vol. 59, no. 5, pp. 140–146, 2017, doi: 10.1109/MAP.2017.2731218.
- [26] M. Taruk and A. Ashari, "Analisis Throughput Varian TCP Pada Model Jaringan WiMAX," *IJCCS (Indonesian J. Comput. Cybern. Syst.*, vol. 10, no. 2, p. 115, 2016, doi: 10.22146/ijccs.15529.
- [27] A. G. Abdullah, D. L. Hakim, M. A. Auliya, A. B. D. Nandiyanto, and L. S. Riza, "Low-cost and portable process control laboratory kit," *Telkomnika (Telecommunication Comput. Electron. Control.*, vol. 16, no. 1, pp. 232–240, 2018, doi: 10.12928/TELKOMNIKA.v16i1.6888.
- [28] L. Ali, L. Rahman, and S. Akhter, "Module-based Edukit for teaching and learning 8051 microcontroller programming," *2nd IEEE Int. Conf. Telecommun. Photonics, ICTP 2017*, vol. 2017-December, no. February 2018, pp. 57–61, 2018, doi: 10.1109/ICTP.2017.8285918.
- [29] M. R. C. Reis et al., "Speed control for direct current motor using optimization tuning for PID controller," *EEEIC 2016 - Int. Conf. Environ. Electr. Eng.*, pp. 3–6, 2016, doi: 10.1109/EEEIC.2016.7555596.
- [30] E. Z. Orji, U. I. Nduanya, and C. V. Oleka, "Microcontroller Based Digital Door Lock Security System Using Keypad," *Int. J. Latest Technol. Eng. Manag. & Appl. Sci.*, vol. 8, no. 1, pp. 92–97, 2019.
- [31] Y. Wang and Z. Chi, "System of wireless temperature and humidity monitoring based on Arduino Uno platform," *Proc. - 2016 6th Int. Conf. Instrum. Meas. Comput. Commun. Control. IMCCC 2016*, pp. 770–773, 2016, doi: 10.1109/IMCCC.2016.89.